



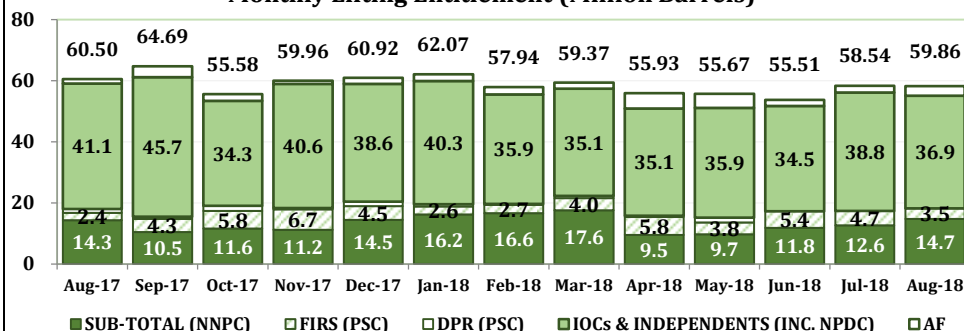
Crude Oil & Condensate Lifting and utilization (Volumes)

LIFTING MONTH	NIGERIAN GOVERNMENT					SUB-TOTAL GOVERNMENT LIFTING	IOCs & INDEPENDENTS (INC. NPDC)	AF	GRAND TOTAL
	FIRS (PSC)	DPR (PSC)	NNPC		SUB-TOTAL (NNPC)				
	Barrels	Barrels	FEDERATION EXPORT	DOMESTIC					
Aug-17	2,448,119	1,267,054	4,599,572	9,706,674	14,306,246	18,021,419	41,079,311	1,400,000	60,500,730
Sep-17	4,302,468	668,519	4,008,861	6,452,172	10,461,033	15,432,020	45,698,160	3,559,312	64,689,492
Oct-17	5,773,143	1,720,306	2,561,037	9,002,509	11,563,546	19,056,995	34,338,071	2,183,483	55,578,549
Nov-17	6,737,220	350,000	5,424,555	5,766,199	11,190,754	18,277,974	40,649,805	1,027,800	59,955,579
Dec-17	4,481,518	1,472,942	4,695,969	9,767,455	14,463,424	20,417,884	38,576,868	1,924,476	60,919,228
Jan-18	2,604,590	767,529	7,721,289	8,447,137	16,168,426	19,540,545	40,333,246	2,197,539	62,071,330
Feb-18	2,735,826	330,513	2,661,229	13,905,930	16,567,159	19,633,498	35,897,340	2,405,761	57,936,599
Mar-18	3,998,312	721,535	4,081,250	13,476,680	17,557,930	22,277,777	35,136,157	1,957,403	59,371,337
Apr-18	5,801,047	459,582	3,269,099	6,273,617	9,542,716	15,803,345	35,055,768	5,074,734	55,933,847
May-18	3,821,881	1,622,504	3,551,457	6,156,880	9,708,337	15,152,722	35,931,693	4,580,728	55,665,143
Jun-18	5,401,824	1,820,367	3,744,609	8,063,090	11,807,699	19,029,890	34,468,928	2,013,876	55,512,694
Jul-18	4,688,091	218,000	4,567,079	8,059,831	12,626,910	17,533,001	38,794,037	2,211,321	58,538,359
Aug-18	3,528,139	1,656,887	6,981,137	7,722,680	14,703,817	19,888,843	36,869,447	3,101,822	59,860,112
TOTAL	56,322,178	13,075,738	57,867,143	112,800,854	170,667,997	240,065,913	492,828,831	33,638,255	766,532,999

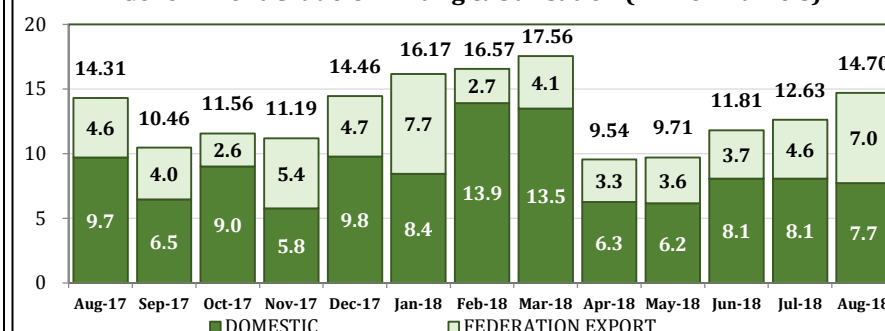
Crude Oil & Condensate Lifting and utilization (Values)

LIFTING MONTH	NIGERIAN GOVERNMENT					SUB-TOTAL GOVERNMENT LIFTING	IOCs & INDEPENDENTS (INC. NPDC)	AF	GRAND TOTAL
	FIRS (PSC)	DPR (PSC)	NNPC		SUB-TOTAL (NNPC)				
	USD	USD	FEDERATION EXPORT	DOMESTIC					
Aug-17	127,587,422	67,677,169	239,479,415	502,248,529	741,727,944	936,992,535	2,138,818,432	70,450,720	3,146,261,687
Sep-17	244,498,741	37,598,234	227,828,174	369,823,011	597,651,185	879,748,160	2,597,078,907	207,616,209	3,684,443,276
Oct-17	336,994,305	100,575,925	147,799,226	530,416,321	678,215,547	1,115,785,776	1,981,673,948	131,625,038	3,229,084,763
Nov-17	426,704,785	21,378,000	342,184,908	368,796,216	710,981,124	1,159,063,909	2,564,219,517	65,225,673	3,788,509,099
Dec-17	299,603,014	98,248,681	308,608,053	637,170,711	945,778,763	1,343,630,458	2,535,181,154	130,319,826	4,009,131,438
Jan-18	177,896,620	53,689,989	535,505,021	588,718,855	1,124,223,876	1,355,810,485	2,797,286,275	151,985,105	4,305,081,865
Feb-18	180,386,813	21,008,185	175,603,492	903,588,307	1,079,191,799	1,280,586,798	2,368,716,963	158,696,046	3,807,999,807
Mar-18	269,929,162	48,545,609	277,242,971	914,568,466	1,191,811,437	1,510,286,208	2,386,830,645	135,637,283	4,032,754,136
Apr-18	432,302,349	34,490,355	244,721,551	444,487,096	689,208,647	1,156,001,351	2,624,240,472	376,244,663	4,156,486,485
May-18	299,424,722	122,889,083	273,781,466	475,825,424	749,606,889	1,171,920,694	2,769,970,626	351,358,131	4,293,249,452
Jun-18	406,236,939	135,039,629	283,433,274	606,282,407	889,715,681	1,430,992,250	2,608,988,314	149,611,719	4,189,592,284
Jul-18	344,896,927	15,726,890	337,620,716	594,863,755	932,484,471	1,293,108,288	2,867,844,097	159,731,438	4,320,683,823
Aug-18	263,357,128	119,751,029	508,540,747	566,188,588	1,074,729,334	1,457,837,492	2,685,753,925	226,465,435	4,370,056,852
TOTAL	3,809,818,927	876,618,779	3,902,349,013	7,502,977,685	11,405,326,698	16,091,764,405	32,926,603,275	2,314,967,286	51,333,334,965

Monthly Lifting Entitlement (Million Barrels)



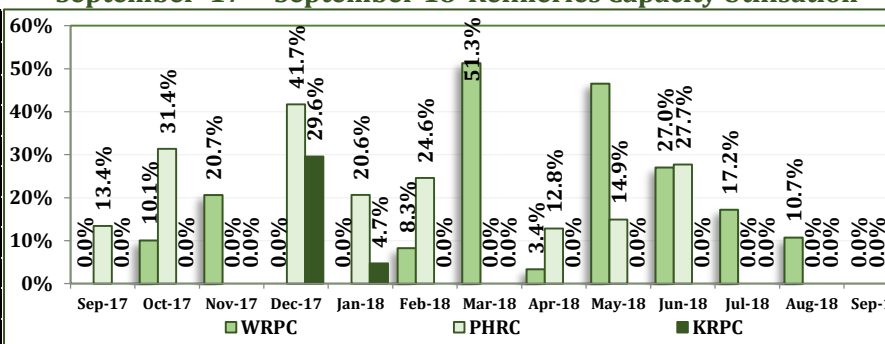
Government Crude Oil Lifting & Utilisation (Million Barrels)



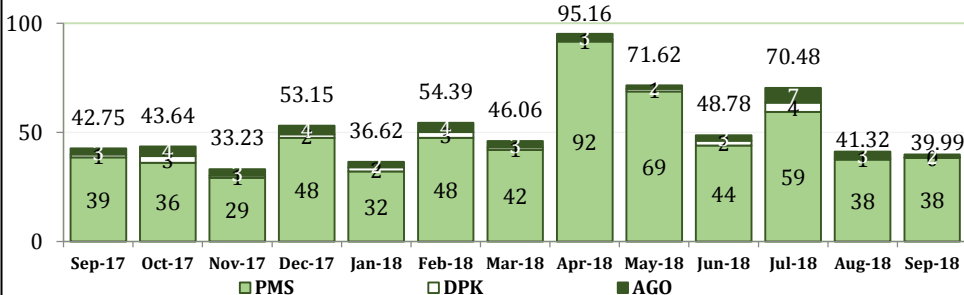
Refineries Operational Performance for the month of September, 2018

Operational Parameters	Units	WRPC		PHRC		KRPC		Consolidated	
		Aug-18	Sep-18	Aug-18	Sep-18	Aug-18	Sep-18	Aug-18	Sep-18
Total Crude Available	MT	159,262	103,524	163,871	160,040	78,833	78,833	401,966	342,397
Closing Stock	MT	102,458	103,524	163,871	160,040	78,833	78,833	345,162	342,397
Crude Processed	MT	56804	0	0	0	0	0	56804	0
(i) Finished Products	MT	52,852	925	1,029	-2,155	0	2,509	53,881	1,279
(ii) Intermediate Products	MT	-2324	-4055	-5,693	-1,828	0	-10,569	-8,017	-16,452
Plant Capacity	kpd	125	125	210	210	110	110	445	445
Capacity Utilization	%	10.75%	0.00%	0.00%	0.00%	0.00%	0.00%	3.02%	0.00%
Losses	%	0.88%	0.00%	0.00%	0.00%	0.00%	0.00%	7.04%	0.00%
Plant Consumption	%	10.17%	0.00%	0.00%	0.00%	0.00%	0.00%	12.22%	0.00%

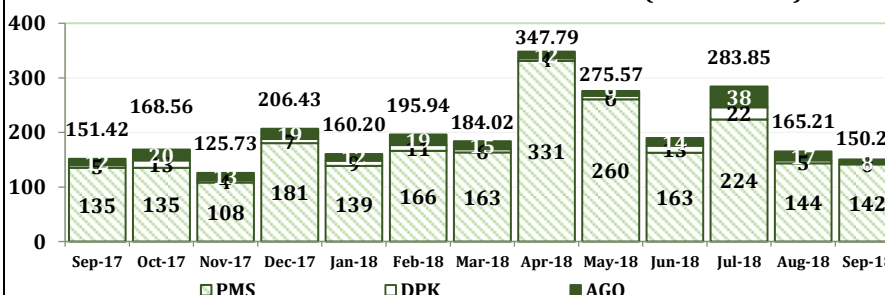
September '17 - September '18 Refineries Capacity Utilisation



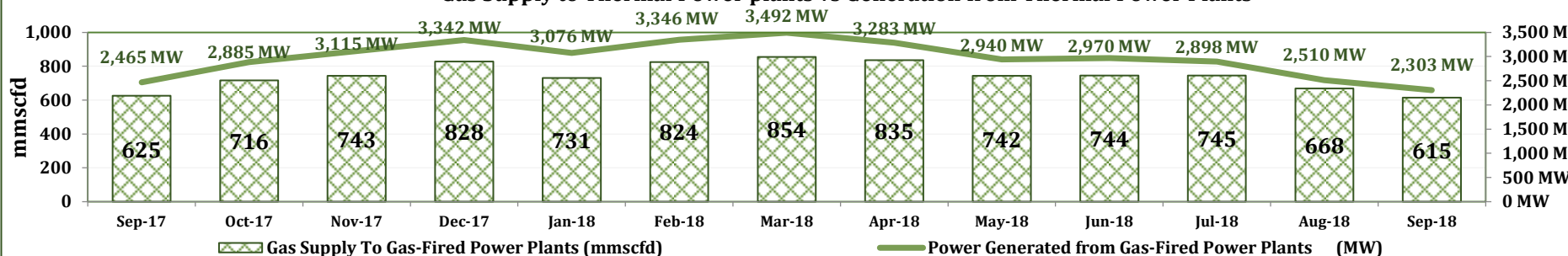
Average Daily PPMC Product Distribution Sales Volume (Million Litres)



Sales Revenue From PPMC Product Distribution (Billion Naira)



Gas Supply to Thermal Power plants vs Generation from Thermal Power Plants



Generation

Disclaimer: All information contained in this report are unaudited Full Report Available on www.nnpcgroup.com

Up-stream

Crude Oil Production & Lifting

Midstream

REFINERIES

Downstream

Products

Gas2Power

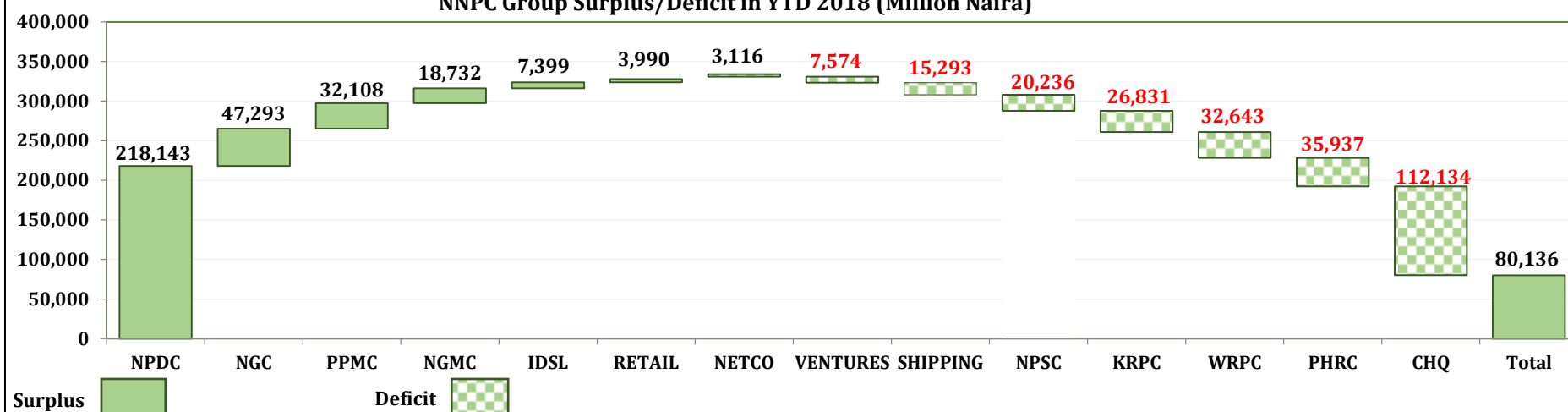


NNPC Group Financial Report by Entity

SBU/CSU	MONTHLY BUDGET (=N= MILLION)			ACTUAL (=N= MILLION)						PTD (=N= MILLION)					
	Revenue	Expense	Surplus/(Deficit)	AUGUST, 2018			SEPTEMBER, 2018			2018 BUDGET			2018 ACTUAL		
				Revenue	Expense	Surplus/(Deficit)	Revenue	Expense	Surplus/(Deficit)	Revenue	Expense	Surplus/(Deficit)	Revenue	Expense	Surplus/(Deficit)
NPDC	94,937	17,631	77,305	79,957	72,519	7,439	106,264	75,572	30,692	854,430	158,682	695,748	753,317	535,174	218,143
IDSL	2,778	2,096	683	2,992	768	2,224	1,284	1,197	87	25,004	18,861	6,143	15,943	8,544	7,399
NETCO	2,212	1,703	509	2,053	1,795	257	4,512	1,385	3,127	19,905	15,373	4,532	20,144	17,028	3,116
Sub-Total	99,927	21,430	78,497	85,002	75,082	9,920	112,059	78,154	33,906	899,339	192,916	706,423	789,404	560,746	228,658
NGC	17,217	13,482	3,735	8,361	3,072	5,289	8,277	1,113	7,164	154,955	121,339	33,616	103,962	56,669	47,293
NGMC	9,327	1,681	7,646	15,573	14,233	1,341	15,398	13,552	1,847	83,941	15,129	68,811	165,743	147,010	18,732
Sub-Total	26,544	15,163	11,381	23,934	17,304	6,630	23,675	14,665	9,010	238,895	136,468	102,427	269,705	203,679	66,026
KRPC	26,800	24,113	2,687	2	2,685	(2,683)	1,369	2,905	(1,536)	241,197	217,018	24,179	1,040	27,871	(26,831)
PHRC	40,130	34,289	5,841	6	4,469	(4,463)	5	2,734	(2,729)	361,172	308,602	52,570	140,811	176,748	(35,937)
WRPC	31,643	27,802	3,842	8,666	12,314	(3,648)	66	2,775	(2,709)	284,790	250,214	34,576	138,174	170,816	(32,643)
Sub-Total	98,573	86,204	12,369	8,675	19,468	(10,793)	1,440	8,414	(6,974)	887,158	775,834	111,325	280,025	375,435	(95,410)
RETAIL	23,159	21,955	1,204	16,434	16,225	208	12,186	12,208	(21)	208,433	197,596	10,837	170,997	167,006	3,990
PPMC	144,859	142,763	2,096	174,176	166,356	7,820	147,327	146,406	921	936,204	916,541	19,664	1,990,261	1,958,153	32,108
NPSC	6,603	4,903	1,700	121	3,107	(2,985)	5,261	19,198	(13,938)	59,426	44,128	15,298	27,017	47,253	(20,236)
SHIPPING	4,572	5,090	(518)	815	3,192	(2,376)	2,265	3,941	(1,676)	41,151	45,814	(4,663)	20,650	35,943	(15,293)
Sub-Total	179,193	174,712	4,481	191,546	188,879	2,667	167,039	181,753	(14,714)	1,245,215	1,204,079	41,136	2,208,925	2,208,355	570
CHQ	18,223	15,109	3,114	218	11,324	(11,106)	109	10,906	(10,797)	164,010	135,980	28,030	1,791	113,925	(112,134)
VENTURES	1,377	3,130	(1,753)	0	1,218	(1,218)	122	708	(586)	12,397	28,173	(15,776)	882	8,456	(7,574)
Sub-Total	19,601	18,239	1,361	218	12,542	(12,324)	231	11,614	(11,383)	176,407	164,153	12,253	2,673	122,381	(119,708)
Grand Total	423,838	315,748	108,090	309,375	313,276	(3,901)	304,445	294,600	9,845	3,447,014	2,473,450	973,564	3,550,732	3,470,596	80,136

Group

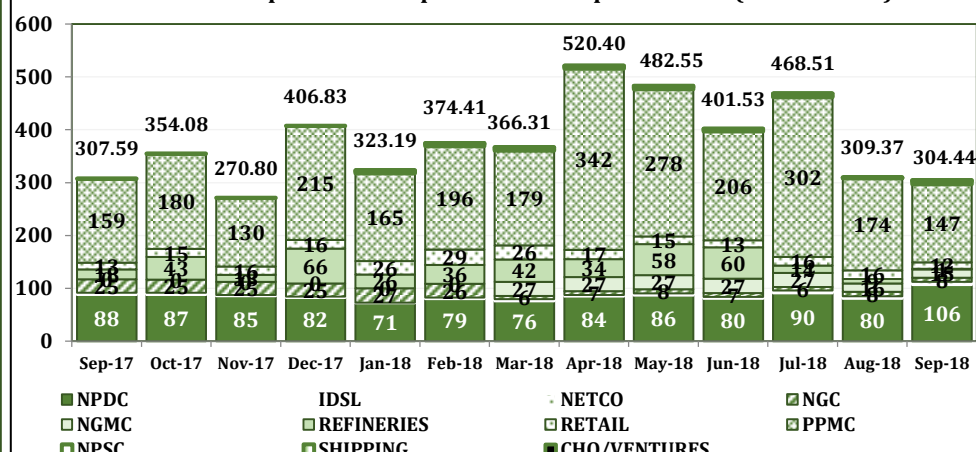
NNPC Group Surplus/Deficit in YTD 2018 (Million Naira)



Change

- This 38th edition of the report shows a trading surplus of ₦9.85Billion which is a laudable improvement of 353% over the previous month's deficit of ₦3.90Billion. This increase in performance is primarily attributable to the robust performance by NPDC..
- National Gas production for September 2018 stood at 240.94BCF translating to an average daily production of 8,031.28mmscfd. This represents 8.01% increase compared to the previous month of September 2017.
- NNPC will therefore, remain undeterred, more focused, accountable and transparent to grow the business and increase profitability for the benefit of all Nigerians.

NNPC Group Revenue: September '17 - September '18 (Billion Naira)



Hydro - Carbon Performance

NNPC Net Remittances
N1.341 Trillion

A total of N1.341 Trillion Naira was remitted by NNPC to Federation net of JV Cost Under-Recovery from Sept '17 - Sept '18

Government Take in Barrels
240.32 Million

240 millions barrels of Crude oil was lifted by NNPC on behalf of FGN out of a total 767 millions barrels fiscalized

Total Gas Sent to Power Plants
292 BCF

2,971MW Average Generation from Gas Fired Power plants for the period Sept '17 - Sept '18

PMS Supplied in Litres
18.63 Million

A total of 18.63 billion litres of PMS was supplied by NNPC (PPMC) for the period of Sept '17 - Sept '18

>NNPC Hydro-Carbon Flash Dashboard – September '17 – September '18

Financial Performance

Revenue

September, 2017 to September, 2018