

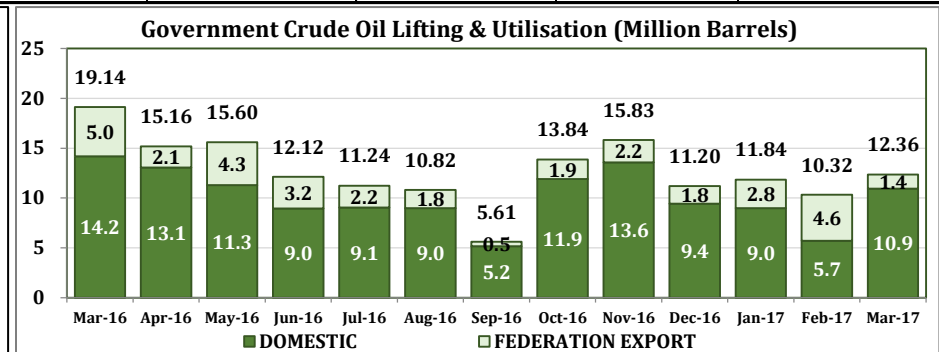
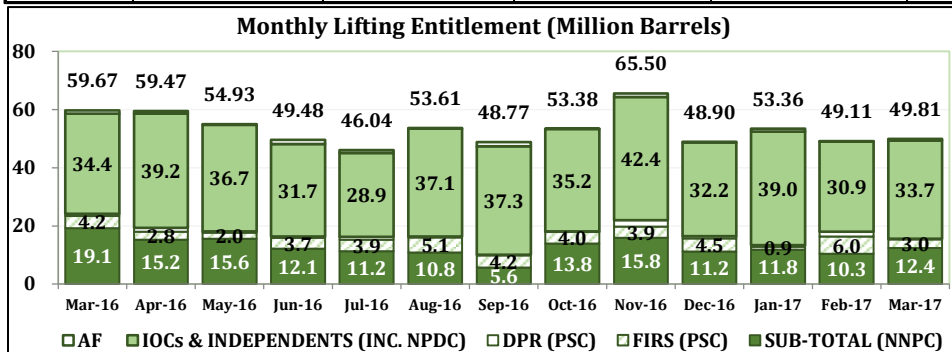


Crude Oil & Condensate Lifting and utilization (Volumes)

LIFTING MONTH	NIGERIAN GOVERNMENT					SUB-TOTAL GOVERNMENT LIFTING	IOCs & INDEPENDENTS (INC. NPDC)	AF	GRAND TOTAL
	FIRS (PSC)	DPR (PSC)	NNPC		SUB-TOTAL (NNPC)				
			FEDERATION EXPORT	DOMESTIC					
Barrels	Barrels	Barrels	Barrels	Barrels	Barrels	Barrels	Barrels	Barrels	
Mar-16	4,223,368	773,000	4,950,908	14,185,585	19,136,493	24,132,861	34,443,416	1,093,000	59,669,277
Apr-16	2,822,524	1,298,533	2,111,342	13,050,958	15,162,300	19,283,357	39,211,187	972,000	59,466,544
May-16	2,045,570	383,157	4,310,166	11,290,998	15,601,164	18,029,891	36,661,725	243,000	54,934,616
Jun-16	3,737,956	500,000	3,159,142	8,958,721	12,117,863	16,355,819	31,737,847	1,385,000	49,478,666
Jul-16	3,925,838	1,049,049	2,181,583	9,056,579	11,238,162	16,213,049	28,851,582	977,000	46,041,631
Aug-16	5,130,420	326,726	1,843,579	8,975,016	10,818,595	16,275,741	37,144,381	190,000	53,610,122
Sep-16	4,209,286	232,000	452,661	5,159,028	5,611,689	10,052,975	37,279,027	1,436,055	48,768,057
Oct-16	4,016,873	187,489	1,943,053	11,901,838	13,844,891	18,049,253	35,207,694	128,000	53,384,947
Nov-16	3,921,311	2,169,768	2,243,402	13,584,651	15,828,053	21,919,132	42,390,053	1,194,000	65,503,185
Dec-16	4,494,376	770,000	1,777,480	9,422,823	11,200,303	16,464,679	32,159,329	280,000	48,904,008
Jan-17	948,174	582,000	2,846,590	8,993,048	11,839,638	13,369,812	38,983,863	1,008,000	53,361,675
Feb-17	5,988,451	1,690,000	4,630,126	5,693,902	10,324,028	18,002,479	30,948,039	159,000	49,109,518
Mar-17	3,021,435	141,200	1,428,409	10,927,538	12,355,947	15,518,582	33,735,943	558,000	49,812,525
TOTAL	48,485,582	10,102,922	33,878,441	131,200,685	165,079,126	223,667,630	458,754,086	9,623,055	692,044,771

Crude Oil & Condensate Lifting and utilization (Values)

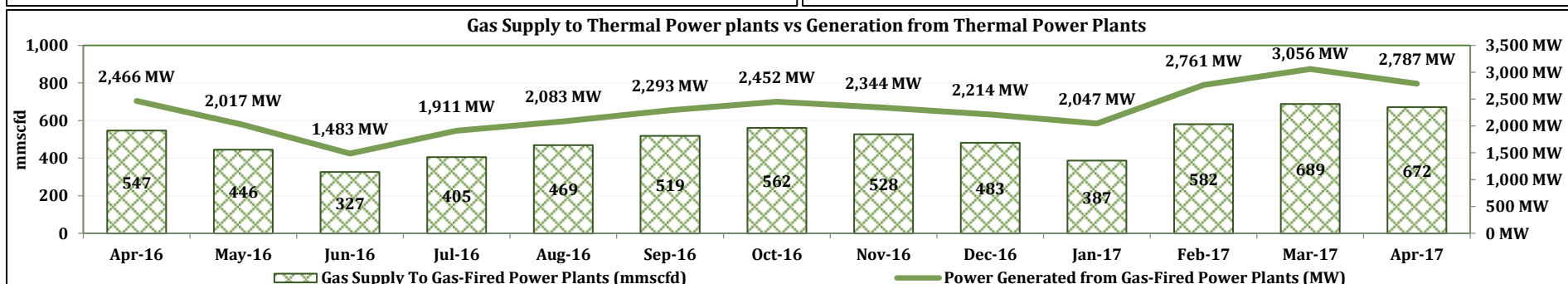
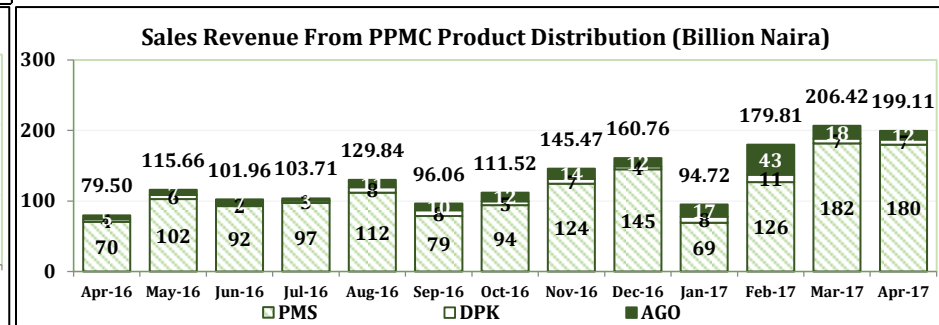
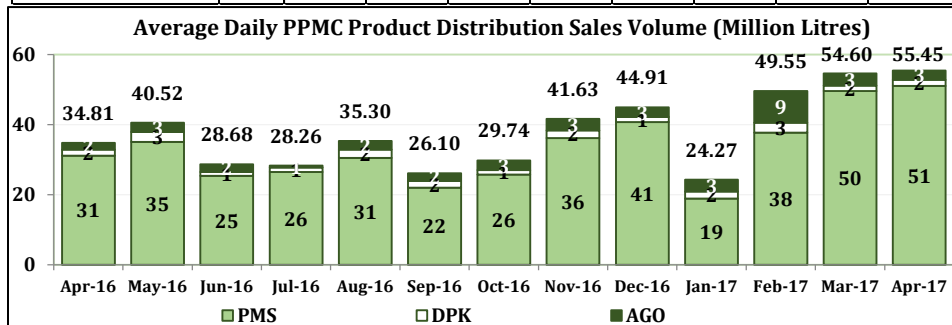
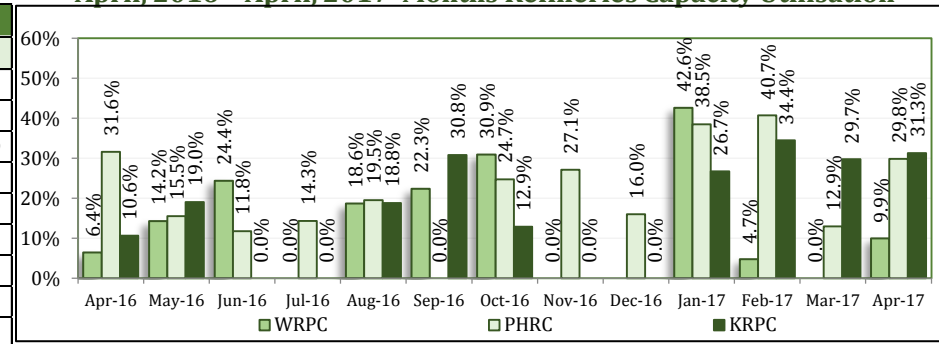
LIFTING MONTH	NIGERIAN GOVERNMENT					SUB-TOTAL GOVERNMENT LIFTING	IOCs & INDEPENDENTS (INC. NPDC)	AF	GRAND TOTAL
	FIRS (PSC)	DPR (PSC)	NNPC		SUB-TOTAL (NNPC)				
			FEDERATION EXPORT	DOMESTIC					
USD	USD	USD	USD	USD	USD	USD	USD	USD	
Mar-16	164,249,331	29,351,438	191,302,792	549,095,159	740,397,951	933,998,720	1,330,891,555	43,470,295	2,308,360,570
Apr-16	114,378,293	47,290,858	89,128,951	547,801,087	636,930,038	798,599,190	1,655,275,164	42,890,542	2,496,764,897
May-16	98,215,758	17,184,396	198,526,555	533,866,083	732,392,638	847,792,791	1,688,641,680	11,360,670	2,547,795,141
Jun-16	178,115,347	23,095,700	153,011,486	432,568,909	585,580,395	786,791,442	1,537,206,978	68,364,520	2,392,362,941
Jul-16	183,977,928	42,080,044	101,542,839	409,294,174	510,837,014	736,894,986	1,342,910,885	47,106,581	2,126,912,452
Aug-16	231,990,027	14,739,086	86,800,375	421,098,417	507,898,793	754,627,906	1,748,851,670	9,113,601	2,512,593,176
Sep-16	203,610,332	23,450,384	21,401,359	245,813,790	267,215,149	494,275,865	1,762,515,118	67,814,400	2,324,605,382
Oct-16	203,824,153	9,306,579	96,311,189	593,575,938	689,887,127	903,017,859	7,931,735,698	6,441,196	8,841,194,753
Nov-16	177,943,887	93,357,159	100,367,748	629,685,928	730,053,676	1,001,354,722	1,896,492,089	57,884,752	2,955,731,563
Dec-16	240,101,215	41,015,570	93,965,963	509,663,435	603,629,397	884,746,182	1,700,093,566	15,267,920	2,600,107,668
Jan-17	53,014,305	32,021,314	157,651,000	498,003,069	655,654,069	740,689,688	2,159,020,080	55,211,751	2,954,921,519
Feb-17	328,632,888	92,396,380	255,498,806	311,957,345	567,456,151	988,485,419	1,707,769,296	8,769,164	2,705,023,879
Mar-17	154,659,432	6,735,341	71,814,310	566,554,156	638,368,465	799,763,238	1,696,099,267	27,917,668	2,523,780,173
TOTAL	2,332,712,895	472,024,249	1,617,323,373	6,248,977,490	7,866,300,863	10,671,038,007	28,157,503,045	461,613,060	39,290,154,112



Refineries Operational Performance for the month of April, 2017

Operational Parameters	Units	WRPC		PHRC		KRPC		Consolidated	
		Mar-17	Apr-17	Mar-17	Apr-17	Mar-17	Apr-17	Mar-17	Apr-17
Total Crude Available	MT	200,562	208,721	286,383	440,976	241,860	253,243	728,805	902,940
Closing Stock	MT	200,562	157,968	171,473	184,855	103,590	112,379	475,625	455,202
Crude Processed	MT	0	50753	114910	256121	138270	140864	253180.1	447737.9
(i) Finished Products	MT	23,857	40,439	143,565	186,759	114,742	80,748	282,164	307,946
(ii) Intermediate Products	MT	-32878	2654	-42,690	53,704	15,777	38,684	-59,791	95,042
Plant Capacity	kpd	125	125	210	210	110	110	445	445
Capacity Utilization	%	0.00%	9.92%	12.94%	29.81%	29.73%	31.30%	13.46%	24.59%
Losses	%	0.00%	2.49%	1.68%	1.44%	1.36%	1.36%	2.59%	1.53%
Plant Consumption	%	0.00%	12.61%	10.54%	4.67%	4.24%	13.85%	9.57%	8.46%

April, 2016- April, 2017 Months Refineries Capacity Utilisation



Up-stream

Crude Oil Production & Lifting

Midstream

REFINERIES

Downstream

Products

Gas2Power

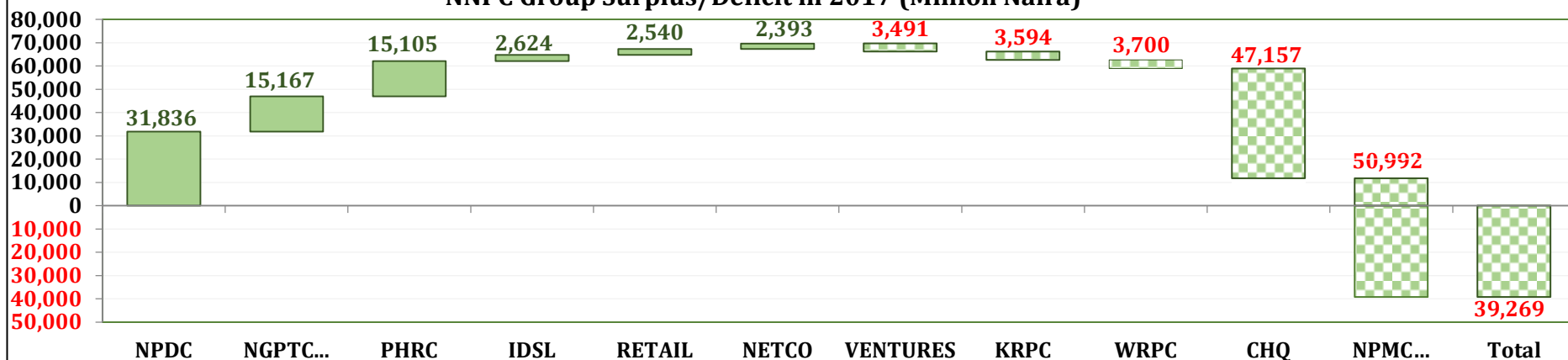


NNPC Group Financial Report by Entity

SBU/CSU	MONTHLY BUDGET (=N= MILLION)			2017 (=N= MILLION)											
				MARCH, 2017			APRIL, 2017			4 MONTH BUDGET			YTD ACTUAL		
	Revenue	Expense	Surplus/(Deficit)	Revenue	Expense	Surplus/(Deficit)	Revenue	Expense	Surplus/(Deficit)	Revenue	Expense	Surplus/(Deficit)	Revenue	Expense	Surplus/(Deficit)
NPDC	25,410	8,679	16,731	41,312	15,366	25,946	10,367	15,705	(5,338)	101,638	34,715	66,923	87,872	56,036	31,836
IDSL	1,084	866	218	1,132	987	145	2,910.7	904	2,006	4,336	3,465	871	5,933	3,309	2,624
NETCO	898	818	80	1,152	691	461	571	463	108	3,593	3,273	320	4,221	1,828	2,393
NGNGPTC/...	16,517	8,895	7,622	19,899	14,654	5,245	20,539	15,339	5,200	66,068	35,578	30,490	77,884	62,717	15,167
Sub-Total	43,909	19,258	24,651	63,495	31,698	31,797	34,387	32,412	1,975	175,635	77,031	98,604	175,910	123,890	52,020
KRPC	5,101	6,134	(1,033)	25,951	25,106	844	17,281.4	18,455	(1,173)	20,405	24,536	(4,131)	81,446	85,040	(3,594)
PHRC	21,452	16,045	5,407	21,752	17,259	4,493	35,808.2	32,743	3,065	85,808	64,180	21,628	155,356	140,251	15,105
WRPC	10,860	8,626	2,235	2,735.7	4,674	(1,938)	7,587.9	7,902	(314)	43,442	34,503	8,939	44,400	48,101	(3,700)
Sub-Total	37,414	30,805	6,609	50,438	47,039	3,399	60,678	59,100	1,578	149,655	123,219	26,436	281,202	273,391	7,810
RETAIL	23,037	18,710	4,327	26,100	25,028	1,072	19,465	18,924	541	92,148	74,841	17,307	85,600	83,061	2,540
NPMC/NPSC..	132,188	125,532	6,656	214,526	242,190	(27,664)	207,629	206,620	1,010	528,751	502,129	26,622	707,715	758,707	(50,992)
Sub-Total	155,225	144,242	10,982	240,626	267,218	(26,592)	227,094	225,543	1,550	620,899	576,970	43,930	793,315	841,767	(48,452)
CHQ	912	12,910	(11,997)	10.62	13,123	(13,112)	33.55	9,652	(9,618)	3,650	51,639	(47,989)	57	47,214	(47,157)
VENTURES	78	2,486	(2,408)	0.45	1,114	(1,114)	1.56	760	(758)	311	9,942	(9,631)	3	3,494	(3,491)
Sub-Total	990	15,395	(14,405)	11	14,237	(14,226)	35.1	10,412	(10,377)	3,961	61,581	(57,620)	60	50,708	(50,647)
Grand Total	237,537	209,700	27,837	354,571	360,192	(5,622)	322,194	327,467	(5,273)	950,149	838,799	111,350	1,250,487	1,289,756	(39,269)

Group

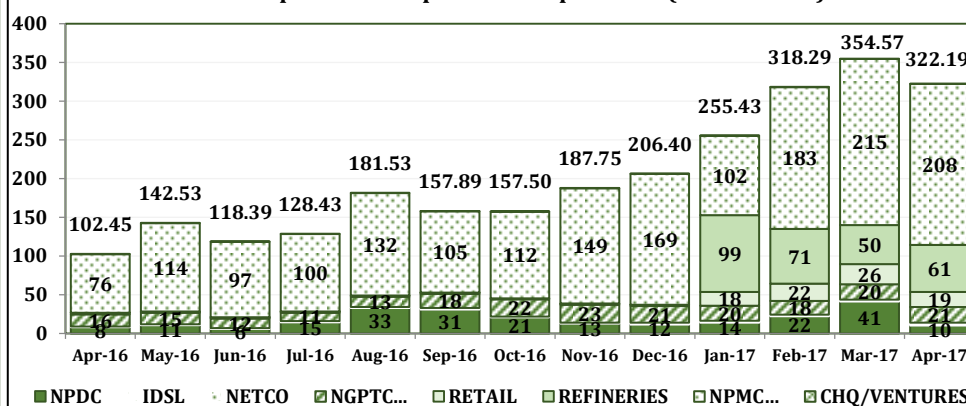
NNPC Group Surplus/Deficit in 2017 (Million Naira)



Financial Performance

- April, 2017 Report indicates constant improvement in NNPC's Performance in line with the 12 Key Business Focus Areas introduced by the new leadership. This performance is however tinged by the subsisting Forcados export line damage which resulted in deferred production revenue of over ₦20bn for the month under review.
- The Corporation is committed to ensuring the restoration of oil & gas production to peak levels and growing oil & gas reserves through very transparent processes.
- NNPC will remain undeterred, more focused, accountable and transparent to grow the business and increase profitability for the benefit of all Nigerians.

NNPC Group Revenue: April 2016 - April 2017 (Billion Naira)



Change

Revenue

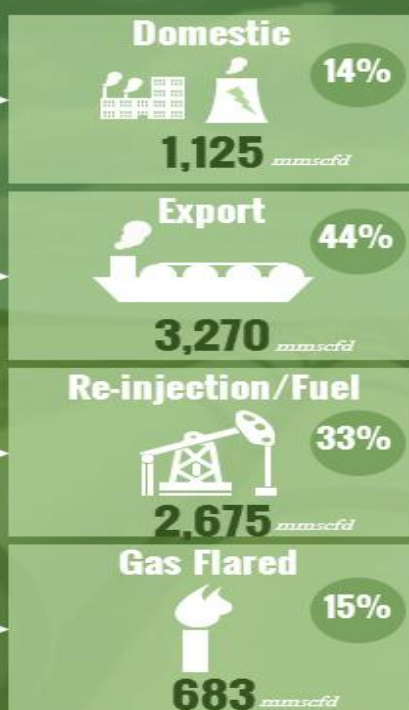
Gas Production and utilization

April, 17 Gas Supply To Power Plants



Gas Production
8,075 mmscfd

An average of 8,075mmscfd of gas was produced in the month of April 2017 out of which 14% was sent to the domestic sector, 44% was exported, 33% was reinjected or used as fuel while the balance 15% was flared.



Thermal Generation
2,301 MW

An average of 679 mmscfd of gas sent to over 20 domestic thermal power plants in the month of April 2017 generating a thermal power output of 2,301 MW to the National grid representing 76.9% of the total national Power generation.

An additional 499 mmscfd of gas sent to the domestic sector was able to power over 50 industrial companies in the Nigerian Economy for the month of April 2017.

National Gas Production & Utilization – April 2017